

SymphoCity 2.0

Your installations, everywhere — under control.

SymphoCity is your multi-location management platform for remotely controlling and monitoring one or many Sympholight installations - from landmarks across cities and countries to cruise ships, shopping malls, and many other applications.

Everyday operational benefits

- Fast fault response — failures are detected early, so teams can react immediately.
- Quick content updates — change content for events or holidays in moments.
- One-touch scheduling — schedule content at the press of a button.
- Lower running costs — system optimization saves energy and cost.

Simple, secure access — no cloud

- Stay connected, stay in control — reach every location directly and securely, without relying on the cloud.

Role-based interfaces

- Tailored interfaces with defined access levels:
 - Standard User — remote control
 - Expert User — override scenes and change configuration

Built for the people who run the space

- Ideal for local service technicians, marketing teams, and property owners.

Simple commercial model

- One-time cost — no subscription, no ongoing cloud fees.





Play board

Update content on the fly!

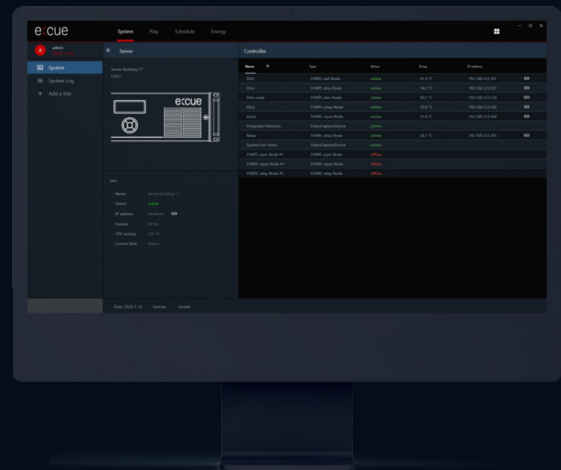
- **One board, every system.** The Play board shows all sequencers and DALI scenes across all your systems — start, stop, pause, or apply intensity changes at a glance, and use the Grandmaster to set the brightness for everything at once.
- **Recolor in seconds.** Change and overwrite colors right in your sequences with the built-in color picker.
- **Boards for every purpose.** Build as many boards as you need — from holiday content to a dedicated service-technician view. The possibilities are endless.
- **Control for everyone.** Switch to tablet mode or output to a wall-mounted screen, and put control right at your team's fingertips.

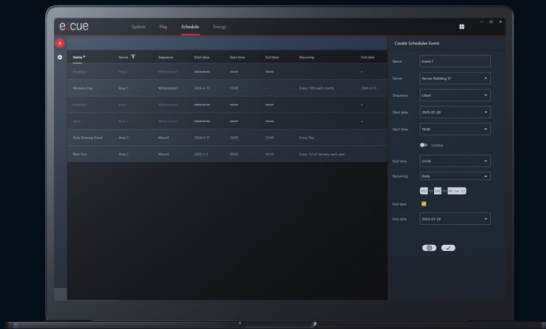


System

All systems at a glance!

- **See everything in one place.** The System Board shows the status of every server and output device. Smart filters and sorting help you spot failures instantly — plus details like temperatures and IP addresses keep your system easy to manage.
- **Go deeper when you need to.** Jump straight into the web interface of any server or node, pull in a live camera feed of your façade, or access an e:cue ActionPad or a network switch's web interface — all from the same view.
- **Never lose track.** Every system logs its own activity, so you're always informed about anomalies. Events can be logged locally and displayed centrally for full visibility.





Planning

What is scheduled to run today?

- **Plan ahead with ease.** Use the Scheduler to set start and stop times for sequences (dynamic lighting) and save them as events.
- **Everything in one table.** All events across all systems appear in a clear, sortable and filterable overview.
- **Set it and forget it.** Schedule recurring events weekly, monthly, or annually – and choose whether they run indefinitely or end on a specific date.

Monitoring

Monitor (RDM & DALI) fixture activities

- **Stay live.** See real-time data from all your devices.
- **Catch problems early.** Instantly detect broken fixtures.
- **Watch the details.** Recognize anomalies like temperature and humidity spikes.
- **Find what you need fast.** Simple filters and sorting by area – and more.
- **Plan ahead.** Export reports for maintenance and better life cycle management.



Global monitoring, local control

- Local execution, always. SymphoCity works like a remote control for your projects. Every change is processed and executed locally, so the show goes on even if the connection drops.

Simple and secure with user roles

- User: Can view, operate, and change assigned items.
- Expert: Full access — assigns rights to other users and has complete control to create and delete boards and connections.

One-time investment, guaranteed

- Buy once, done. The license is a one-time purchase with no ongoing costs — no cloud, no subscription.

Designed for every connection

- Built for tough networks. Runs fully even with low bandwidth, VPNs, limited data tariffs, or interrupted connections.
- Adapts automatically. The switchable Data Saver Mode keeps SymphoCity running smoothly in any environment.

**Scalable from one-to-many projects**

- Start small, grow big. Works with a single installation — no extra hardware needed when run on e:cue LCE servers.
- Pay for what you need. Each board can be activated per instance, with more affordable licenses available for smaller SYMPL Core Sp and FUSION projects.

Specifications

Valid for SymphoCity v2

System requirements (minimum)

Server hosting sever component:

- Windows 11
- 8 Core CPU, 2+ GHz
- 16 GB RAM
- 256GB SSD

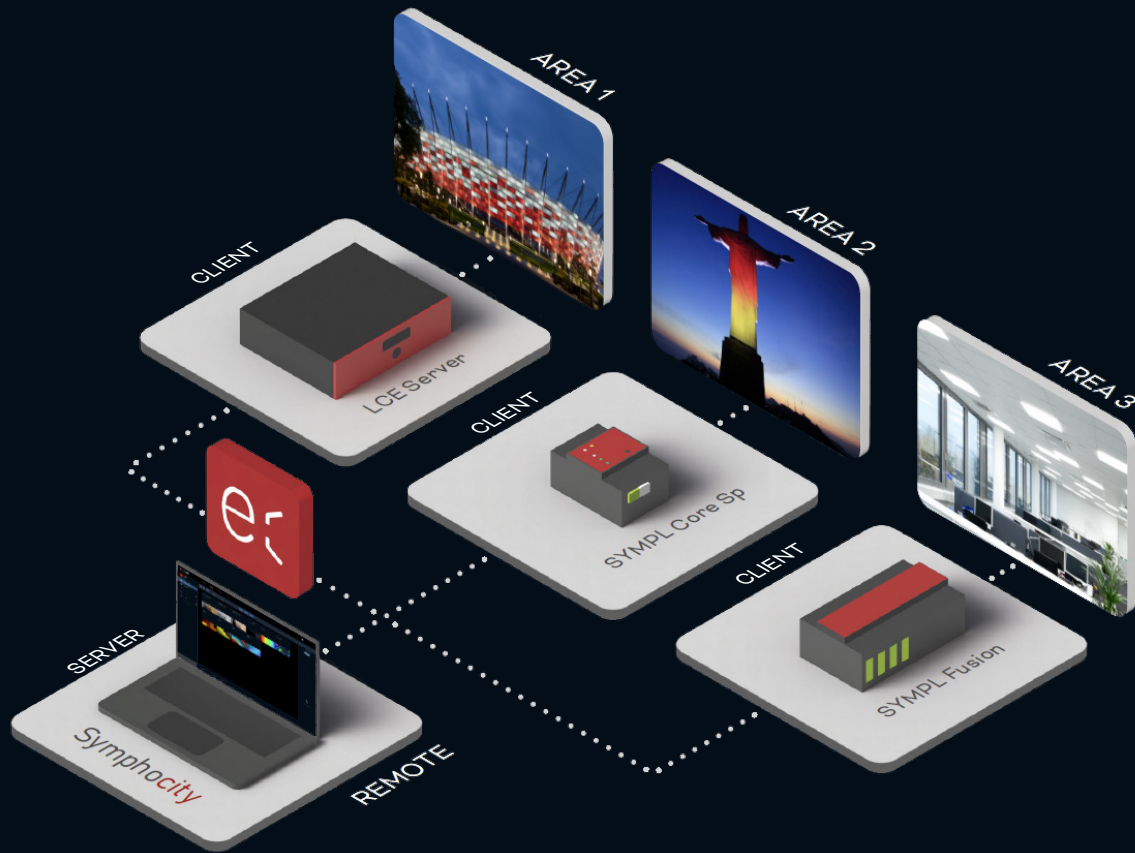
Server running client component:

- Windows 11
- 4 Core CPU, 1.5+ GHz
- 8 GB RAM
- 500MB free disk space
- display resolution: 1600 x 1000 (minimum)

Supported protocols

- DMX512
- RDM
- DALI OSRAM input standard
- DALI version 2

System overview



Ordering

| | |
|----------------------------------|-----------------|
| · SymphoCity System Board | SE24000003600 |
| · SymphoCity System Board | SE24000003700 |
| · SymphoCity Scheduler Board | SE104851052800 |
| · for SYMPL Fusion / Core Sp | SE104851052900 |
| · SymphoCity Play Board | SECS23100060435 |
| · for SYMPL Fusion / Core Sp | SECS23100060535 |
| · SymphoCity Fixtures Board | SECS23100060835 |
| · for SYMPL Fusion / Core Sp | SECS23100060835 |

Identcode

Licensing

Each Sympholight instance you want to monitor in SymphoCity needs its own licensed credits — one for every board you use. You also need a Sympholight “Gateway Communication” feature for each client instance.

Ordering works just like Sympholight credits: simply contact your local sales representative.