

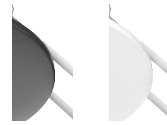


# LUXPOINT® LED Downlight Trims

## Datasheet



Colors:



Black White



Our LED downlight trims enhance recessed lighting with stylish, functional designs. With options like white, black finishes, they blend seamlessly with ceilings.

### Benefits

- Environmentally Friendly
- Easy Installation
- Wide Range of Application

### Applications

- Home
- Hotel
- Shops
- Restaurant
- Other demanding environments

# LUXPOINT® LED Downlight Trims

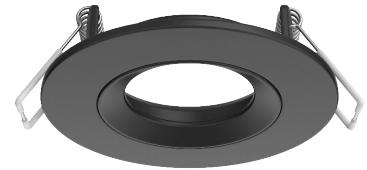
## Technical Data



DT001



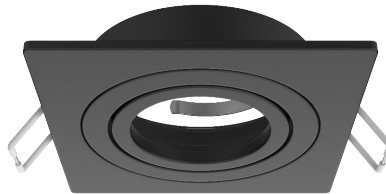
DT002



DT003



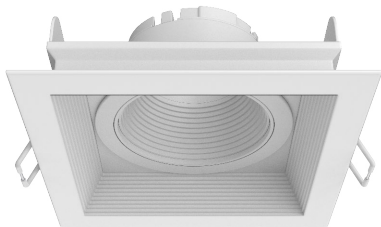
DT004



DT005



DT006



DT007



DT008



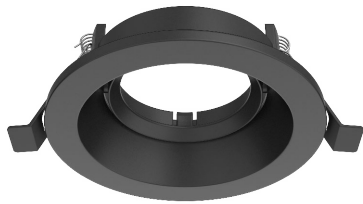
DT009



DT010

# LUXPOINT® LED Downlight Trims

## Technical Data



DT011



DT012



DT013



DT014



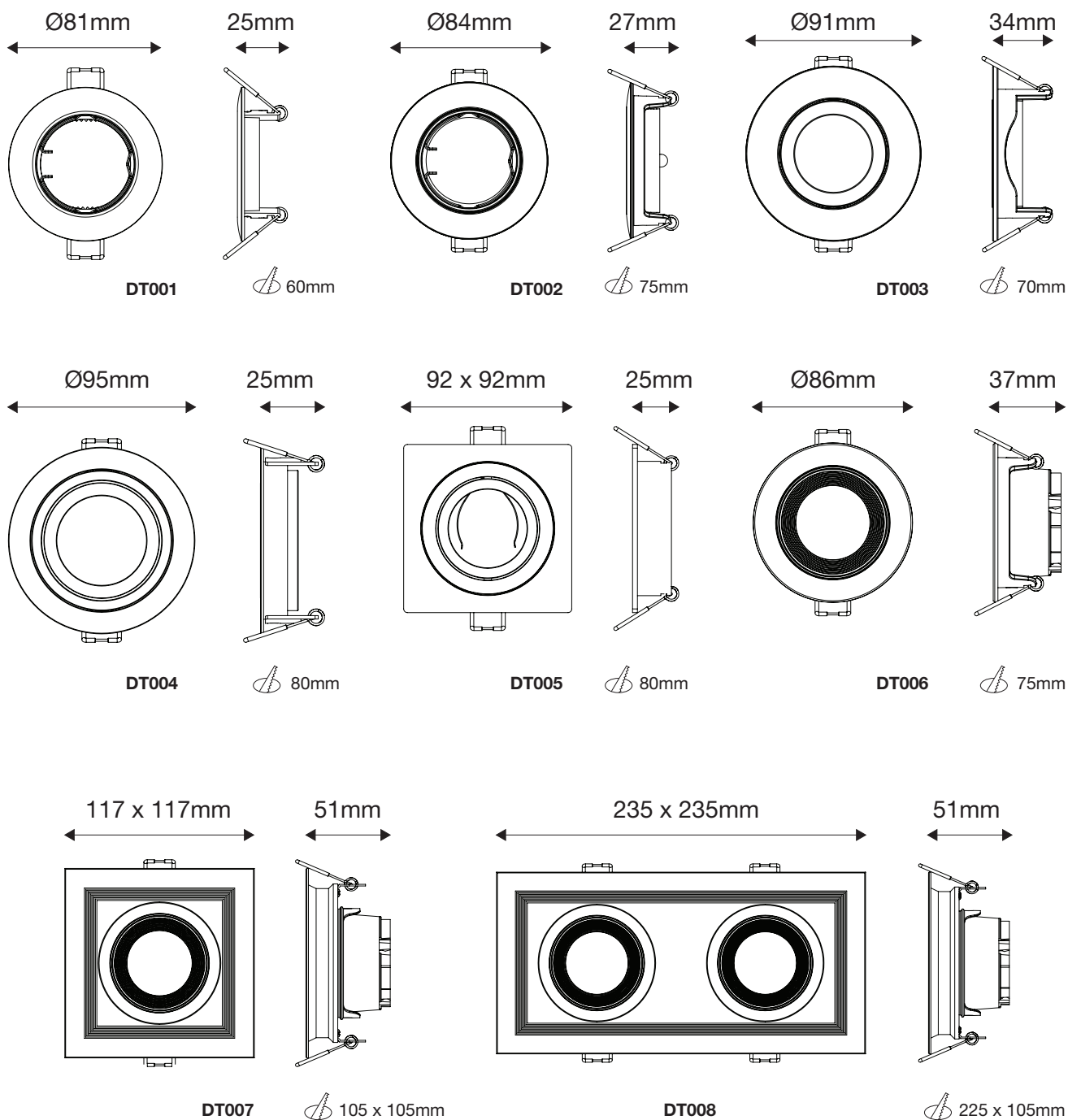
DT015

### Specifications

CE, UKCA, RoHS	Aluminum +Polycarbonate(PC)
<b>Operating Temperature</b>	-10°C ~ 45°C
<b>Storage Temperature</b>	-20°C ~ 60°C
<b>Environment</b>	Indoor
<b>Safety Approval</b>	CE, UKCA, RoHS
<b>Mercury content</b>	0.0mg
<b>Warranty</b>	2 years

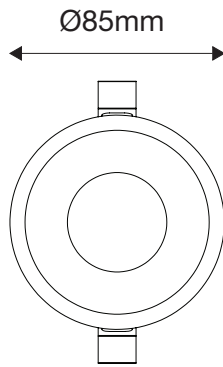
# LUXPOINT® LED Downlight Trims

## Dimension

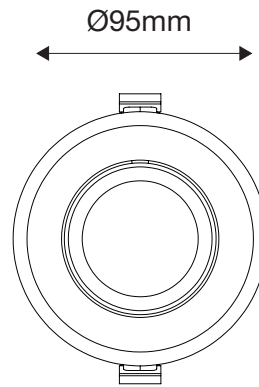
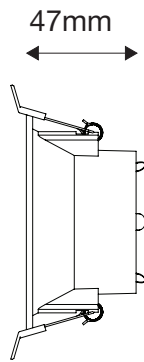


# LUXPOINT® LED Downlight Trims

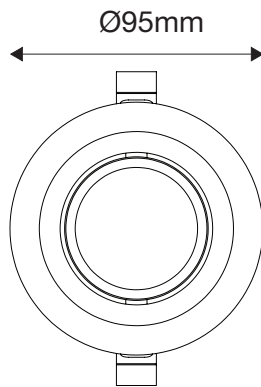
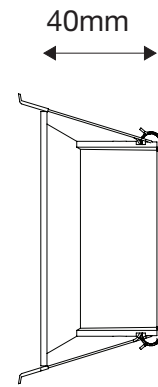
## Dimension



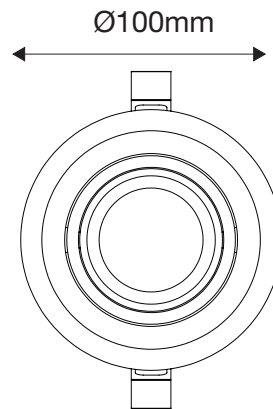
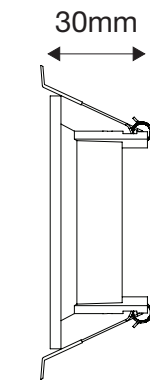
**DT009**



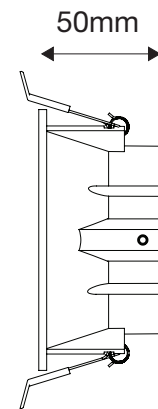
**DT010**



**DT011**



**DT012**



Due to the special conditions of manufacturing process of LED, the typical data of technical parameters can only reflect statistical figures and do not necessarily correspond to the actual parameters of each single product which could differ from typical data.

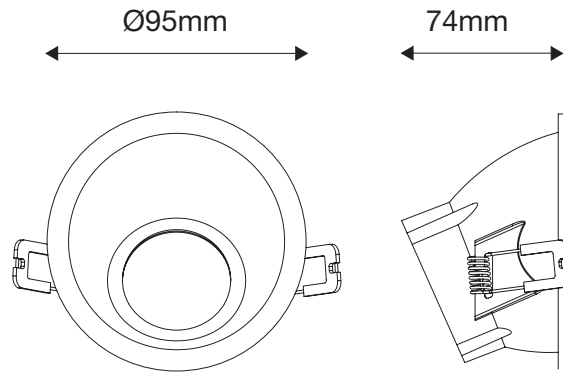
Exceeding maximum ratings for operation voltage will cause hazardous overload and will likely destroy the LED module.

Exceeding maximum ratings for operation and storage temperature will reduce expected life time or destroy the LED module.

Specifications are subject to change without notice. Errors and omission excepted, always make sure to use the most recent release.

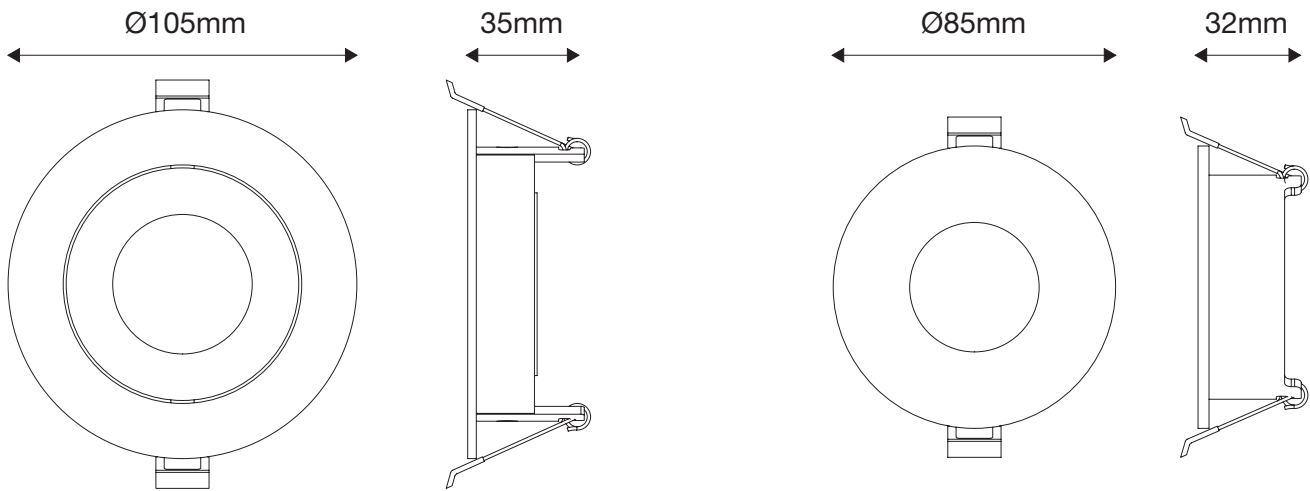
# LUXPOINT® LED Downlight Trims

## Dimension



**DT013**

$\text{Ø}85\text{mm}$



**DT014**

$\text{Ø}85\text{mm}$

**DT015**

$\text{Ø}70\text{mm}$

Due to the special conditions of manufacturing process of LED, the typical data of technical parameters can only reflect statistical figures and do not necessarily correspond to the actual parameters of each single product which could differ from typical data.

Exceeding maximum ratings for operation voltage will cause hazardous overload and will likely destroy the LED module.

Exceeding maximum ratings for operation and storage temperature will reduce expected life time or destroy the LED module.

Specifications are subject to change without notice. Errors and omission excepted, always make sure to use the most recent release.

# LUXPOINT® LED Downlight Trims

## Ordering codes

### Fixture

Short Text	Shape	Size	cut-out	Item code	EAN-13
LP DT001 C F 60 WH	Round	Ø81 x 25mm	Ø60mm	TXGL25100033555	4897135737545
LP DT001 C F 60 BL	Round	Ø81 x 25mm	Ø60mm	TXGL25100033655	4897135737552
LP DT002 C A 75 WH	Round	Ø84 x 27mm	Ø75mm	TXGL25100033755	4897135737569
LP DT002 C A 75 BL	Round	Ø84 x 27mm	Ø75mm	TXGL25100033855	4897135737576
LP DT003 C A 70 WH	Round	Ø91 x 34mm	Ø70mm	TXGL25100033955	4897135737583
LP DT003 C A 70 BL	Round	Ø91 x 34mm	Ø70mm	TXGL25100034055	4897135737590
LP DT004 C A 80 WH	Round	Ø95 x 25mm	Ø80mm	TXGL25100034155	4897135737606
LP DT004 C A 80 BL	Round	Ø95 x 25mm	Ø80mm	TXGL25100034255	4897135737613
LP DT005 S A 80 WH	Square	92 x 92 x 25mm	Ø80mm	TXGL25100034355	4897135737620
LP DT005 S A 80 BL	Square	92 x 92 x 25mm	Ø80mm	TXGL25100034455	4897135737637
LP DT006 C F 75 WH	Round	Ø86 x 37mm	Ø75mm	TXGL25100034555	4897135737644
LP DT007 S F 105x105 WH	Square	Ø117 x 117 x 51mm	105 x 105mm	TXGL25100034655	4897135737651
LP DT008 R F 225x105 WH	Retanglar	Ø235 x 235 x 51mm	225 x 105mm	TXGL25100034755	4897135737668
LP DT009 C F 75 WH	Round	Ø85 x H47mm	Ø75mm	TXGL25100080655	4895271101558
LP DT009 C F 75 BL	Round	Ø85 x H47mm	Ø75mm	TXGL25100080755	4895271101565
LP DT009 C F 75 WH IP65	Round	Ø85 x H47mm	Ø75mm	TXGL26100132155	4895271102500
LP DT009 C F 75 BL IP65	Round	Ø85 x H47mm	Ø75mm	TXGL26100132255	4895271102517
LP DT010 C A 85 WH	Round	Ø95 x H40mm	Ø85mm	TXGL25100080855	4895271101572
LP DT010 C A 85 BL	Round	Ø95 x H40mm	Ø85mm	TXGL25100080955	4895271101589
LP DT011 C A 75 WH	Round	Ø95 x H30mm	Ø75mm	TXGL25100081055	4895271101596
LP DT011 C A 75 BL	Round	Ø95 x H30mm	Ø75mm	TXGL25100081155	4895271101602
LP DT012 C A 90 WH	Round	Ø100 x H50mm	Ø90mm	TXGL25100081255	4895271101619
LP DT012 C A 90 BL	Round	Ø100 x H50mm	Ø90mm	TXGL25100081355	4895271101626
LP DT013 C F 85 WH	Round	Ø95 x H74mm	Ø85mm	TXGA25100116955	4895271102197
LP DT013 C F 85 BL	Round	Ø95 x H74mm	Ø85mm	TXGA25100117055	4895271103033
LP DT014 C A 85 WH	Round	Ø105 x H35mm	Ø85mm	TXGA26100131555	4895271102364
LP DT014 C A 85 BL	Round	Ø105 x H35mm	Ø85mm	TXGA26100131655	4895271102371
LP DT015 C F 70 WH	Round	Ø85 x H32mm	Ø70mm	TXGA26100131755	4895271102388
LP DT015 C F 70 BL	Round	Ø85 x H32mm	Ø70mm	TXGA26100131855	4895271102395

Service contact:  
Traxon Technologies Ltd.  
Room 1604, 16/F, First Group Centre, 23 Wang Chiu Road,  
Kowloon Bay, Kowloon, Hong Kong, China  
[www.traxon-ecue.com](http://www.traxon-ecue.com)

Traxon Technologies Europe GmbH  
Im Dörener Feld 8, 33100 Paderborn, Germany