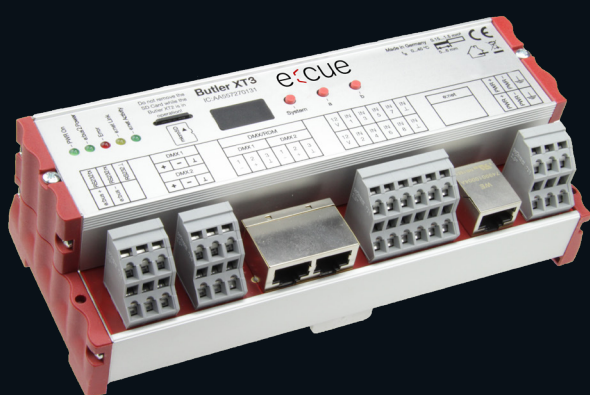


Butler XT3

Information for Use



Read the Information for Use and the Safety Instructions carefully. Subject to modification without prior notice.

Typographical and other errors do not justify any claim for damages. Modification of the product is prohibited.

This document is designed for electricians, system administrators, and installers of the product.

All product names and trademarks mentioned in this manual are trademarks of their respective owners.

Except for internal use, relinquishment of the instructions to a third party, duplication in any type or form - also extracts - as well as exploitation and / or communication of the contents is not permitted.

IC: CL24100004935

Edition:

28.10.2025 [EN_Butler_XT3_Setup_v1p1]

Published by:

Traxon Technologies Europe GmbH
Karl-Schurz-Strasse 38
33100 Paderborn, Germany

©2025 Traxon Technologies Europe GmbH
All rights reserved

Downloads and more information at:
www.ecue.com

Traxon Technologies Europe GmbH
Sales Operations
Karl-Schurz-Str. 38
33100 Paderborn, Germany
+49 5251 54648-0
support@ecue.com

Table of Contents

1	Safety instructions	3
1.1	Symbols	3
1.2	General safety instructions	3
2	General device description	4
2.1	Delivery content	4
2.2	Optional accessories:	4
3	General remarks	5
3.1	Transport	5
3.2	Unpacking	5
3.3	Warranty regulations	5
3.4	Maintenance and Repair	5
3.5	Disposal	5
3.6	Support	6
3.7	Cybersecurity	6
4	Connector panel	7
4.1	Connecting the clamp terminals	7
4.2	Power	8
4.3	e:net	8
4.4	Digital inputs	8
4.5	DMX	8
4.6	e:bus2	9
4.7	RS-232	9
5	Micro SD card	10
6	Interface elements	11
6.1	System button	11
6.2	Buttons a and b	11
6.3	Status LEDs	11
6.4	System display	12
7	Standalone configuration	13
7.1	Using the standalone web interface	13
8	Online configuration with Programmer	14
8.1	Network parameters	15
8.2	Connecting more than one Butler XT3	17
9	Standalone control via web browser	18
10	Adjusting the internal Real Time Clock	18
11	Firmware update	19
12	Action Pad and Mobile Action Pad	19
13	Technical specifications	19
14	Problem analysis	22
14.1	Software	22
14.2	Hardware	23
15	Dimensions	24
16	Connection diagram	24

1 Safety instructions

Please read the safety instructions, provided in a separate manual, carefully. Make sure that the environmental, mounting, and installation prerequisites are met. This manual should be kept at a safe place and in reach of the device.

1.1 Symbols



The exclamation mark warns about possible damage of the device itself, to connected devices, and to the user.



The information symbol gives general hints and informs about handling and procedures for use of the device.



- Only work on the product when it is de-energized to prevent electrical shocks. Incorrect handling may damage the unit.



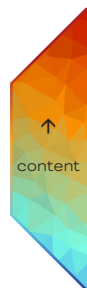
- Device components can reach high temperatures! Let unit cool down after operation before mounting or removing unit to avoid burnings.



- The product must only be installed and put into operation by a qualified electrician. The applicable safety regulations and accident prevention regulations must be observed. Otherwise the unit may be damaged.
- The device must be supplied by a separate certified SELV Class 2 power supply.
- Do not route network, DMX or any other communication line together with power lines. Data traffic or functions can be disturbed.
- To prevent the device from overheating, only operate it in well-ventilated environment. The ventilation slots may not be obstructed. Otherwise the unit may overheat and fail.
- The operation of this device may cause radio interference in residential areas.
- The product may only be operated in the operating modes described in the manual. All other applications are considered to be inappropriate use. If the product is not used as intended, there is no guarantee that it will operate safely.
- Repairs may only be carried out by authorized, specially trained personnel to ensure reliability. When in doubt, contact e:cue service. Incorrect handling may damage the unit.
- This equipment is compliant with Class A of EN55032. In a residential environment this equipment may cause radio interference.



- If safety instructions are missing, please contact Traxon e:cue to receive a new copy.



2 General device description

The Butler XT3 is a DMX/RDM engine which can be used in standalone mode to replay and loop lighting shows which have been previously uploaded and programmed using a PC running the e:cue LAS software suite. It can also be used as a DMX/RDM device, controlled by another e:cue engine. In standalone mode, the Butler XT3 can control up to 1,024 DMX/RDM channels. It is possible to increase the DMX/RDM channel count to 65,536 channels by clustering more Butler XT3s. The engine offers a variety of connectivity options for controlling the lighting show running on the device. These include direct connection to the Glass Touch GT12X, RS-232, digital inputs and Ethernet. In Sympholight, the Butler XT3 can be used as an online device, but no show upload possible.

Highlights of the Butler XT3

- Controls up to 1,024 DMX/RDM channels
- Remote control via Glass Touch GT12X User Terminals (up to 8), using the e:bus2 protocol → not e:bus compatible (old Glass Touch series and Butler XT2)!
- Supports RDM protocol for bidirectional communication
- Internal real-time and astronomical clock
- Standalone configuration via web browser
- Control in standalone mode with ActionPad applications for desktop or iOS and Android
- Serial input port (RS-232) for connectivity to 3rd party systems
- Eight freely configurable (optically isolated) digital inputs
- MicroSD card for show upload/configuration file storage (included in delivery)
- Freely configurable actions for standalone mode (e.g. play, pause, resume, stop, previous and next cue list, intensity up/down), plays up to eight cuelist in parallel
- Master intensity dimmable
- Cue list download from e:cue Lighting Application Suite

2.1 Delivery content

- | | |
|---------------------------------|---------------|
| • Butler XT3 | CL24100004935 |
| • microSD card for show storage | AA6137401HA |
| • Safety instructions | |
| • Welcome card | |

2.2 Optional accessories:

- | | |
|---|---------------|
| • Accessory pack
(including power supply, network cable,
RS-232 to open wire adaptor, CAT5e
cross cable 1m, e:cue software CD) | AA556690035 |
| • Glass Touch GT12X White - Custom labeling | CL25100005435 |
| • Glass Touch GT12X White - Fixed Number Layout | CL25100008135 |
| • Glass Touch GT12X Black - Custom labeling | tba |
| • Glass Touch GT12X Black - Fixed Number Layout | tba |
| • Glass Touch GT12X - Custom Print | CL25200008035 |



3 General remarks

3.1 Transport

Only transport the device in its original packaging. This protects the device from damage.

3.2 Unpacking

Only unpack the e:cue Butler XT3 at its installation location. To protect the device against condensation water, unpack it and wait until all moisture remaining in the device has evaporated. Condensation can occur when the device is moved from a cold to a warm location. Keep the packaging for use in case of further transport. Inspect all parts for completeness regarding chapter „2.1 Delivery content“ on page 4. If there is apparent damage to the device or parts are missing from the delivery scope, please contact the Traxon e:cue Support service.

3.3 Warranty regulations

Depending on the product, warranty regulations are of different duration. The warranty time is usually noted in the quote and in the order confirmation. See www.traxon-ecue.com/terms-and-conditions for details. Legal warranty regulations apply in any case.

3.4 Maintenance and Repair

This device requires no maintenance.



- Before dismounting, appropriate measures must be taken to protect the respective components against damage caused by electrostatic discharge (ESD protection).
- Do not try to repair the device. Return it to your Traxon e:cue distributor for replacement or repair.

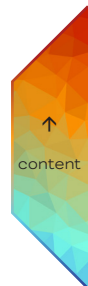
To update the firmware see „11 Firmware update“ on page 19.

3.5 Disposal



Batteries and technical appliances must not be disposed of with domestic waste, but should be handed in at the appropriate collection and disposal points.

The proper disposal of packing materials and of the device is the responsibility of the respective user and for his account; in all other matters, the retrieval obligation for packing materials and the device is subject to the statutory regulations.



3.6 Support

In case of technical problems or questions regarding installation and repair please contact:

Traxon Technologies Europe GmbH
Customer Service
Karl-Schurz-Str. 38
33100 Paderborn, Germany
+49 (5251) 54648-0
support@ecue.com

3.7 Cybersecurity



Cybersecurity disclaimer

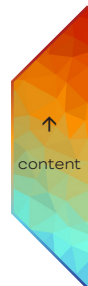
In order to protect building automation systems, plants, systems, machines and networks against cyber threats, it is necessary to implement – and continuously maintain – a holistic, state-of-the-art security concept. Traxon's product portfolio including this product you are about to install only forms one element of such a concept. Keep into account that Traxon's products including the product you are about to install contain the ability of third parties to connect to the device via USB, wired and wireless network interfaces.

You are responsible for preventing unauthorized access to your building automation system, plants, systems, machines and networks which should only be connected to an enterprise network or the internet if and to the extent such a connection is necessary and only when appropriate security measures (e.g. firewalls and/or network segmentation) are in place. Additionally, Traxon's guidance on appropriate security measures should be taken into account.

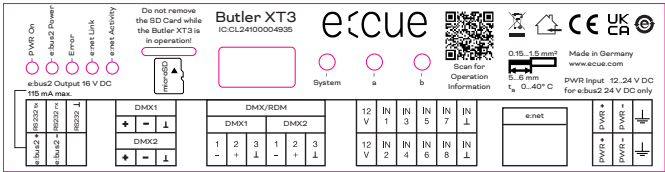
Traxon's portfolio undergoes continuous development to make it more secure.

Traxon strongly recommends that updates are applied as soon as they are available and that the latest versions are used. Use of versions that are no longer supported, and failure to apply the latest updates may increase your exposure to cyber threats.

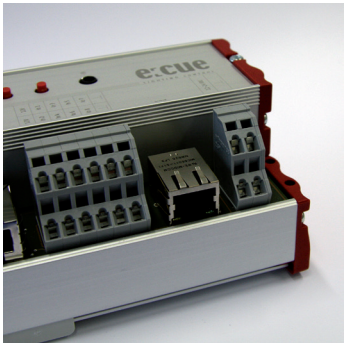
Traxon strongly recommends to comply with security advisories on the latest security threats, patches and other related measures.



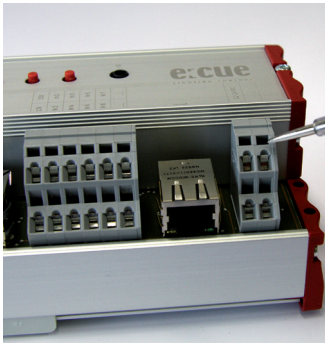
4 Connector panel



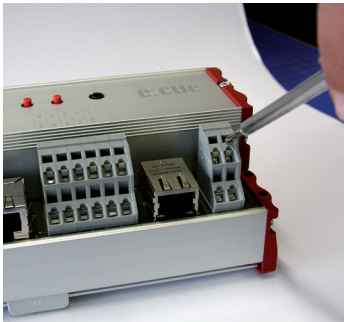
4.1 Connecting the clamp terminals



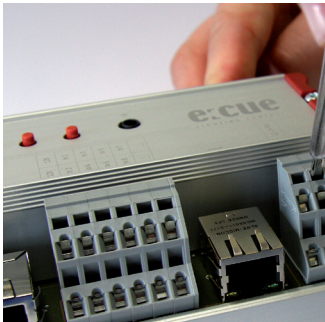
Butler XT3 terminals



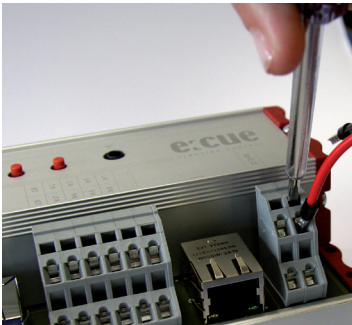
Use an electrostatic sensitive screw driver



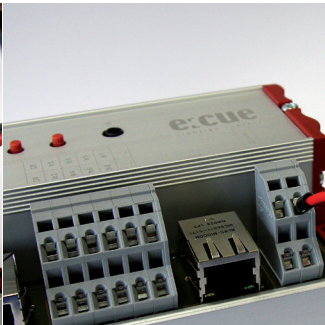
Put the screw driver into one of the small slots above the contact you want to connect.



Push the screw driver into e slot and pull it upwards. The slot should open.



While holding the slot open, put the cable in. Once the cable is secured in the slot, release the screw driver.



Check to make sure the cable is secured. Connect all other cables in the same manner.

4.2 Power

The Butler XT3 must be powered by an external AC/DC Power Supply.



Power over Ethernet is not supported. Always use an external power supply.

The power supply must meet the following requirements:

- Output Voltage: 24 V DC
- Output Current: depending on the load of the connected devices. The Butler XT3 itself (no connections) runs with 90 mA @24 V or 175 mA @ 12 V.

Always connect protective ground with the appropriate terminal in the power supply section.

4.3 e:net

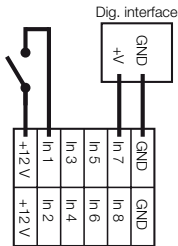
Use standard shielded CAT5 (RJ45) network cabling for e:net.



Please remember that e:net requires an isolated network segment and cannot operate properly when using e.g. internet or video/audio streaming in the same network simultaneously.

4.4 Digital inputs

The Butler XT3 offers eight configurable optically isolated digital inputs for connectivity to separate systems/sensors providing 12 V DC and 15 mA power supply. See connection diagram on the right below for details.



The input voltage range for the digital inputs is 9 to 24 V DC.

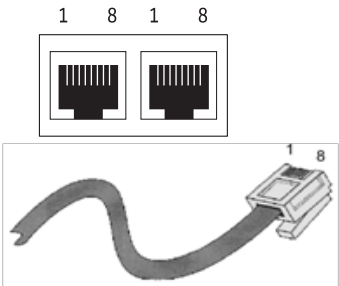
4.5 DMX

The DMX output is taken from the RJ45 connectors labeled „DMX1“ and „DMX2“ or via clamp contacts.



Terminate each DMX line with an 120 Ohms resistor at the end to gain stability of the DMX bus.





pin no.	signal
1	DMX-
2	DMX+
3	GND
4	n/c
5	VCC in
6	GND
7	nc
8	nc

4.6 e:bus2



e:bus2 cables must not be routed together with mains cables.



e:bus2 devices (Glass Touch X series, Butler XT3) are not compatible with previous e:bus devices (Glass Touch series, Butler XT2).

The e:bus2 is a 2-wire bus system using clamp/screw terminal connectors to attach the wires safely and robust. The wiring between the devices is extremely flexible. In addition to the free topology design, you do not need to pay attention to polarities. As long as the two e:bus2 connectors of a user terminal are connected to the Butler XT3's connectors, everything will work fine. The two e:bus2 connectors of a user terminal can be connected to the Butler XT3's connectors either way: e:bus2 is not polarity sensitive. The terminal devices will recognize the polarity and configure themselves the proper way.

Cable type	Cable cross section in mm²	Maximum cable length in m		
		25 °C	50 °C	75 °C
Copper	0.14	31	28	26
	0.5	112	102	93
	0.75	168	153	140
	1.0	224	204	187
	1.5	300	300	281
	2.0	300	300	300
	2.5	300	300	300

4.7 RS-232

For communication between different systems, the Butler XT3 offers an RS-232 interface (configuration: 9600 baud, 8 databits, no parity, 1 stopbit).



Format:
[Command] [Parameter1 (3 digits)] {optional:[Parameter2 (3 digits)]} \r\n

Parameters always must have 3 characters with leading 0s. Transmission must end with \r\n (in HEX code: 0x0d 0x0a). No space characters allowed, examples:

Play Cue list 1: PC001\r\n
Set Grand-Master Intensity to 20%: IN000020\r\n

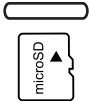
Command	Parameter1	Parameter2	Action
PC	nnn		Play Cue list nnn
TP	nnn		Toggle Play Cue list nnn
PP	nnn		Toggle Pause for Cue list nnn
NX	mmm		Next for Mutex Group mmm
PV	mmm		Previous for Mutex Group mmm
IN	nnn	ppp	Set Intensity to ppp (000-100)% for nnn: 000 :Grand Master 001-099: Cue list Master 129 – 193: V-Master 1 to 64
ST	nnn		Stop Cue list nnn 000 : Stop All
TL	sss		Trigger Label for Label Index sss, e.g. TL001

5 Micro SD card

The Butler XT3 comes with a micro SD card and cannot operate if no micro SD card is present. A typical show file incl. configuration files is not bigger than a few megabytes, the Butler XT3 is designed to work with such typical show files. It is possible to create show files that exceed the performance capabilities of the Butler XT3. Some hints:

- The larger the show, the longer the seek times to the cue list start points.
- The more state-aware Action Pad items (mainly faders or buttons reflecting cue list play state), the higher the permanent load to the Butler XT3.

If the micro SD card has been removed during operation and is restored, the show may be continued by pressing the system button on the device – otherwise you need to



reboot.

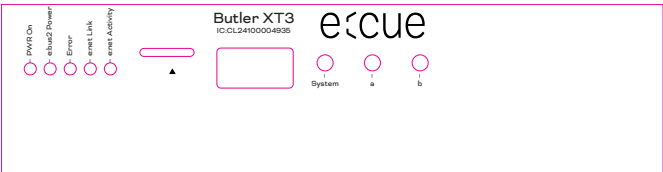


— Do not remove the SD card while the Butler XT3 is in operation!



— The Butler XT3 supports SD cards of the following types: SD & SDHC. Please be aware that SDXC cards are not supported.

6 Interface elements



6.1 System button

The **System** button can be used alone or in combination with the **a** button. Press the **System** button and keep it pressed. When a function is displayed, release the button and the function will be executed.

In an error condition:

Acknowledge notification and reset the system.

In normal operation:

Long press (ca. 4 seconds):

When a blinking **rES** is displayed, release the button and the Butler XT3 will restart.

Button System and “a” in combination:

When a blinking **dEF** is displayed, release the buttons. The Butler XT3 will be reset to factory state. This includes the IP address.

6.2 Buttons a and b

For the buttons **a** and **b** you can assign functions with the Lighting Application Suite, depending on the operation mode.

6.3 Status LEDs

PWR On	OFF: no power supplied ON: power supplied
e:bus2 Power	OFF: e:bus2 power not sufficient (< 24 V) ON: e:bus2 powered and OK Blinking: e:bus2 short circuit
Error	OFF: system OK ON: error condition - see display



e:net Link	OFF: no Ethernet link ON: link established
e:net Activity	OFF: no data transfer ON: Ethernet data exchange in progress

6.4 System display

Online mode

Display	Description
o	A small rotation circle indicated online mode.

Standalone mode

In standalone mode the display shows the actual sync state, the output mode and the number of running cue lists.

Display	Description
A	Master mode.
b	Slave mode.
d	DMX modus.
0 ... 8	0...8 for number of parallel running cue lists.
Crđ	SD card error, no card inserted, check the SD card. Reset with system button.
EP	e:bus2 overload due to over current or power failure. This can happen when connecting devices with high inrush current during operation. Check the e:bus2 for shortcuts and the power supply for correct supply voltage. Reset with the system button.
EC	Configuration of the e:bus2 failed. If repeated please contact the e:cue service.
SEr	The serial number could not be read. Reset the system. If the error happens again, please contact the e:cue service.
S	A blinking S indicates standby. The Butler XT3 is in standalone mode, but no cue lists are running or no cue lists available.



Loader mode

Display	Description
LOAD	The Butler XT3 is in loader mode and waits for a firmware update.

7 Standalone configuration

The Butler XT3 can be configured in standalone mode, without the Lighting Application Suite, in which case it can only be set up using a web browser and a PC. Alternatively, it can be set up in online mode with the Lighting Application Suite. Standalone mode configuration is recommended when the Butler XT3 has its factory settings.

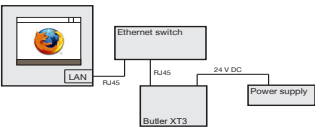
For a complete overview of other functions like clustering and assignments of Actions and programming of shows see the System Manual for the Lighting Application Suite, available for download from www.ecue.com.

i When the Butler XT3 is in online mode all defined Triggers and Actions are run in the Programmer. For standalone mode only those Triggers and Actions get exported that the Butler XT3 can handle in standalone mode. All online mode-only Actions and Triggers are not exported.

7.1 Using the standalone web interface

You can set the network parameters of the Butler XT3 without any other system using a standard web browser on any PC or PC-like system.

Connect the Butler XT3 with power to an Ethernet switch to the server (LCE or PC). If you want to connect the Butler XT3 without Ethernet switch to the server use a so called cross cable, as not all Ethernet interfaces support automatic RX/TX detection.



Start the web browser and enter the IP address of the Butler XT3 in the address field of the browser; in factory state 192.168.123.1 (if the Butler was configured differently before and you do not know the IP address, perform a »Reset to factory settings«). You can now see the current settings and parameters.

To change the configuration, click the upper Configure button and enter the password. The default password is “ecue”, it can be changed during configuration.



Click **Enter** and the main configuration dialogue gets displayed. Change the parameters (explained in the following chapter) and click **Submit**.

Enter Configuration Password

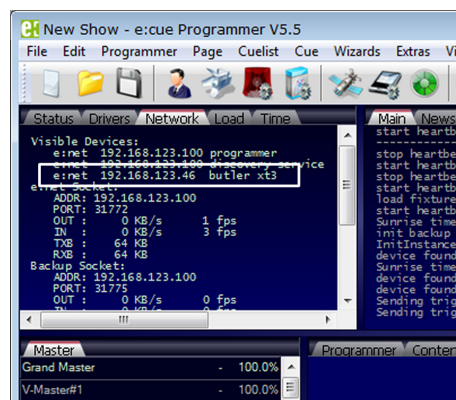
Set the parameters and click Submit to save the changes. See the next chapter for a description of the parameters.

Configuration

8 Online configuration with Programmer

Connect the Butler XT3 via a switch to a system running e:cue's Lighting Application Suite; start the Programmer.

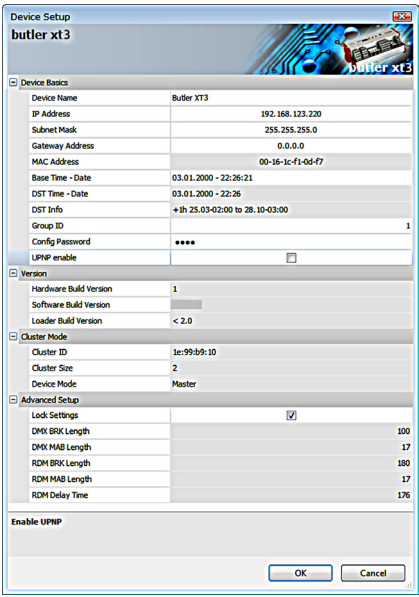
Select the Network tab in the status window in the upper left. Any Butler XT3 devices which are connected to the network should appear in the list. If they do not show up in the list, check if the IP address settings for your computer are correct and the network range is 192.168.123.*, the default address of any new Butler XT3 is 192.168.123.1. Please also make sure your fire wall does not prevent communication between the computer and the Butler XT3. The Butler XT3 should become visible.



Click on the Butler XT3 line in the Network display, this opens the device configuration dialog. Here you can set all driver properties of the Butler XT3.

Click the IP address – typically this should read 192.168.123.1 at this stage, when the Butler XT3 is still set to factory defaults.

- Assign a new IP address e.g. 192.168.123.200.
- Use the same procedure for the remaining network parameters: Subnet Mask - usually 255.255.255.0, Gateway – no gateway
- Give the Butler XT3 a unique name.
- Set the base time, this is the time without DST correction, add shift and dates for DST begin and end.
- Do not modify DMX settings except you know what you are doing.
- See the following table for a complete overview of network parameters.
- Apply the changes with the Ok button



If no show is exported to the Butler XT3, e. g. when the Butler XT3 is in factory state, no DST information and master/slave settings are available. As soon as a show has been downloaded, correct DST information and master/slave setting will be shown.

8.1 Network parameters

Device Basics	
Device Name	The device will be displayed with this name in the e:cue programmer.
IP address	The IP address of the device (default: 192.168.123.1)
Subnet Mask	The netmask of the device (Default: 255.255.255.0)
Gateway address	The default gateway of the device (Default: no gateway)
MAC address	The physical address of the device (read only)
Base Time - Date	The base time/date of the device. This is the time to which the Daylight Saving Time offset is added.
DST Time - Date	The current real time and date with DST shift.
DST Info	Information about the DST settings, shift and date range
Group ID	Group ID for the cluster configuration.



Password	Apply a password to protect the configuration. Default is "ecue".
UPNP enable	Enable Universal Plug and Play for the IP network.

Versions

Hardware Build Version	The hardware version (read only).
Software Build Version	The software version (read only).

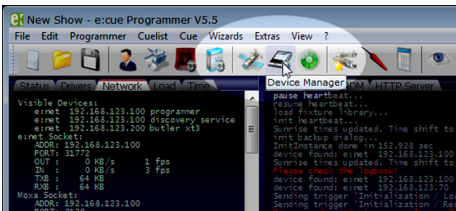
Cluster Mode

Cluster ID	Generated ID of the cluster
Cluster Size	Number of engines in this cluster
Device Mode	Master or Slave n/m (n of m)

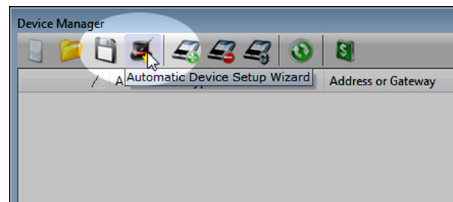
Advanced Setup

Lock Settings	Checkmark, set by default, avoids changes for DMX and RDM by chance.
BRK Length	Break signal length in μ s for the DMX protocol.
MAB Length	Mark after break length in μ s for the DMX protocol.
BRK Length RDM	Break length in μ s for the RDM protocol.
MAB Length RDM	Mark after break length in μ s for the RDM protocol.
RDM Switch Time	The RDM Tx to Rx length in μ s.
BRK Length	Break length for e:pix protocol (not used).
MAB Length	Mark after break length for e:pix protocol (not used).
RTC Trim	Adjust the internal real time clock (RTC), value is seconds per 28 days.
RTC Trim Fine	Additional fine adjustment for the RTC.

To add the Butler XT3 to the Programmer configuration start the Device Manager.

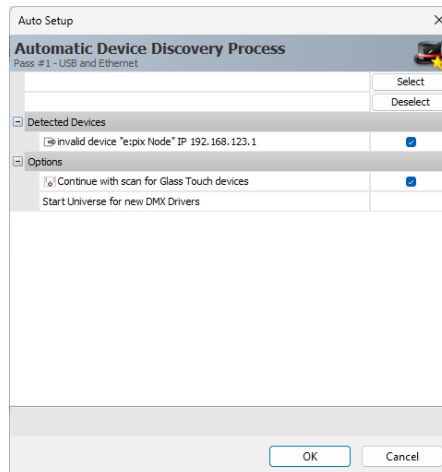


Execute the Automatic Setup Wizard.
The Butler XT3 will be found and displayed:



Set the checkmark for the Butler XT3 to add it to your setup or click the Select button. Clear the checkmark for the e:bus2 scan if there are no e:bus2 components. To set the driver properties for the Butler XT3 double-click the Butler XT3 in den device overview of the Device Manager.

Click Ok to add the Butler XT3 to the Programmer configuration, the Butler XT3 is now available.

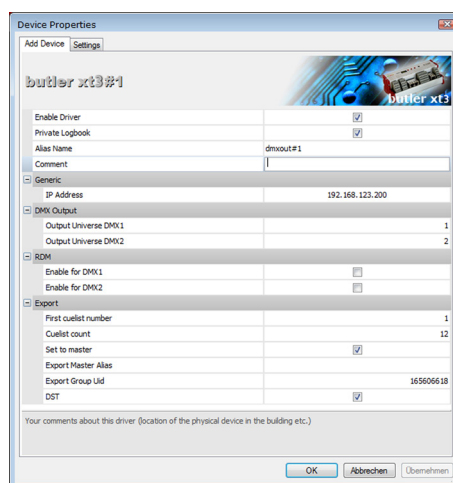


Double-click the new Butler XT3 in the Device Manager and an additional configuration dialog gets displayed to set more parameters for the Butler XT3.

Using this device setup dialog you can set the DMX universes as well as the required Actions for system buttons and digital inputs.

Set the **Set to master** checkmark to define this Butler XT3 as a master engine and give it a unique master alias in the Export section.

When finished close the device setup dialog with Ok.



The DST settings are taken from the **Sunrise Timer** settings in the **Show Properties** of the Programmer.

8.2 Connecting more than one Butler XT3

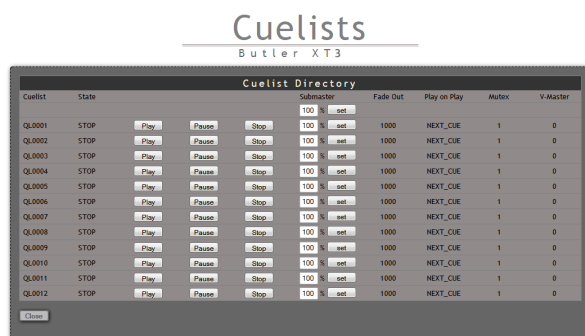
In case you have several Butler XT3 they need to be configured one at a time. Do not connect all of them to the network immediately! This is due to the fact that the devices all come with the same IP-address by factory default. If they are connected simultaneously an IP-address conflict will occur and configuration is not possible. Instead, connect the Butler XT3 one at a time. Connect the first Butler XT3 and assign a new IP-address to the device (e.g. 192.168.123.11). Repeat this sequence until all devices have been assigned with an individual IP-address. In a next step all devices can

be hooked up to the connecting network.

9 Standalone control via web browser

In standalone mode it is possible to control the Butler XT3 via a web browser.

Connect a PC-based system to the e:net interface like shown in the chapter » Using the standalone web interface«. Start the browser and enter the IP address of the Butler XT3 as URL. From the start screen click **Configure** under the cue list settings and you will get a basic control screen.



You cannot only control a single Butler XT3 but also clusters of Butler XT3 and Butler S2s.

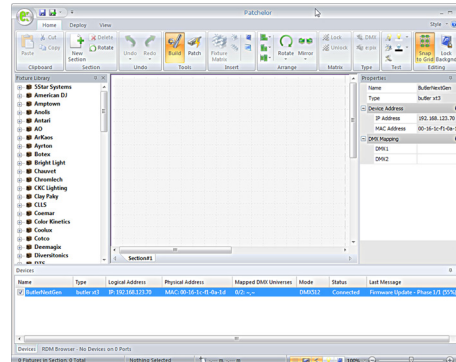
10 Adjusting the internal Real Time Clock

In the Advanced Settings during setup you can adjust the speed of the real time clock, if this is not precise enough. You can add a time shift as parameter RTC trim, which adds or subtracts ± 48 , ± 97 or ± 145 seconds in a 28 days cycle. If this is not sufficient you can fine trim the real time clock with the second parameter RTC trim fine in a range 0 to 31. The setting of this parameter controls component variances of the real time clock. You have to try which value fits best.

11 Firmware update

To update the firmware of the Butler XT3 proceed the following way:

- Start the Patchelator of the e:cue Lighting Application Suite.
- In the list of found devices select the appropriate Butler XT3.
- Press the right mouse button and select **Update Firmware**.
- Select the file with the new firmware (*.bxt).
- After the download is complete the Butler XT3 will restart.
- The new firmware is available now.



12 Action Pad and Mobile Action Pad

The Butler XT3 can be controlled from a remote instance like a PC, an iOS device like iPhone or iPad, or via Android devices. See the »System Manual« for the Lighting Application Suite 7.0 for a detailed description.



Without Adobe Flash support for web browsers, you need an additional application to remotely control the Butler XT3 in standalone mode via ActionPad on a PC. Please contact your local e:cue support to get the desktop application.

13 Technical specifications

General specifications

Dimensions 177 x 60 x 75 mm / 7 x 2.4 x 3 inch

Weight 0.4 kg / 0.88 lbs

Power supply 12 ... 24 V DC
with e:bus2 24 V DC only
170 mA @ 24 V @ 8 x Glass Touch

Operating/storage temperature	0 ... 40 °C / 32 ... 104 °F
Operating/storage humidity	0 ... 80%, non-condensing
Protection class	IP20
Housing	Aluminium, polyamide 6.6
Mounting	on 35 mm DIN rail
Max. start up time after voltage interruption	10 seconds

Engine specifications

User interface	3 Buttons, 5 LEDs, 7-segment-LED
System links	1 x e:bus2 (clamp terminals) 1 x e:net (RJ45 Ethernet) 1 x RS-232 (clamp terminals) 2 x DMX (RJ45, clamp terminals) 8 x optically isolated digital inputs

Display	7-segment LED
---------	---------------

Data storage	on micro SD card
--------------	------------------

e:net specification

Connection	RJ45, 8P8C
Speed	100 MBit/s
POE capability	no

DMX output specification

Number of outputs	2 DMX universes, 1024 channels
Short circuit protection	yes, reversible
Over-voltage protection	yes
DMX operation	Acc. DMX-512A standard
Galvanic isolation	yes, 1 kV max.

e:bus2 specification

not compatible with previous e:bus devices	
--	--



Number of outputs	1 x clamp terminals
Short circuit protection	yes, reversible
Over-voltage protection	yes
Max. output power	max 16 V DC x 115 mA
Max. # Glass Touches	8
Optical isolation	no

Digital inputs specification

Number of inputs	8 clamp terminals
Optical isolation	yes, 3 kV max.
Max. voltage	24 V DC (low signal: < 1 V, high signal: > 4 V)
Power supply for external contacts	12 V DC x 15 mA
Short circuit protection	yes, reversible
Over-voltage protection	yes

RS-232

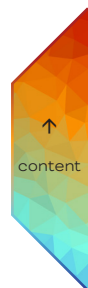
Transfer rate & Configuration	9600 baud, 8 bits, no parity, 1 stopbit
Galvanic isolation	yes



14 Problem analysis

14.1 Software

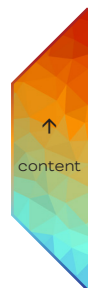
Problem	Check	Cause
Butler XT3 not online or not visible in Programmer/Patchelor.	Computer network adapter with fixed and correct IP Address assigned?	The computer's IP address must be assigned as fixed address. Also, the first three parts of the IP address must be the same IP as for the Butler XT3. Example: 192.168.123.xxx.
Butler XT3 not online or not visible in Programmer/Patchelor.	Programmer/Patchelor network adapter configured?	e:net interface included IP address must be assigned to Programmer/Patchelor (Application Options, Advanced tab).
Butler XT3 not online or not visible in Programmer/Patchelor.	More than one Butler XT3 with same IP address?	Factory default of Traxon Products is IP address 192.168.123.1.
Butler XT3 not online or not visible in Programmer/Patchelor.	Direct connection from computer to Butler XT3, without cross link cable or LAN switch?	Some network adapters do not support a direct LAN connection (without LAN switch).
Triggers like "Initialisation" without function.	Trigger for "Initialisation" assigned?	Butler XT3 only executes triggers if they are configured and transferred with the Quick Update in the Device Manager.
RDM without function.	RDM enable.	RDM "Enable for DMX 1 or 2" must be activated in Programmer's Device Properties in Device Manager.
Butler XT3 configuration dialog in network status window cannot be opened.	Butler XT3 is bound in Programmer and "Enable Driver" is set.	Remove Butler XT3 in Device Manager or disable driver in Device Manager's configuration dialog.



Realtime Triggers do not work at the selected time/date.	Butler XT3 Base Time/Date correct? Triggers transferred to Butler XT3?	Butler XT3 Base Time and Date is configurable in the Device Setup via the network overview window. Run a quick update in the Programmer.
Show behaves differently if uploaded to the Butler XT3.	Only supported standalone Triggers used?	For detailed information check “System Manual LAS” chapter “16.7 Possible Trigger”.

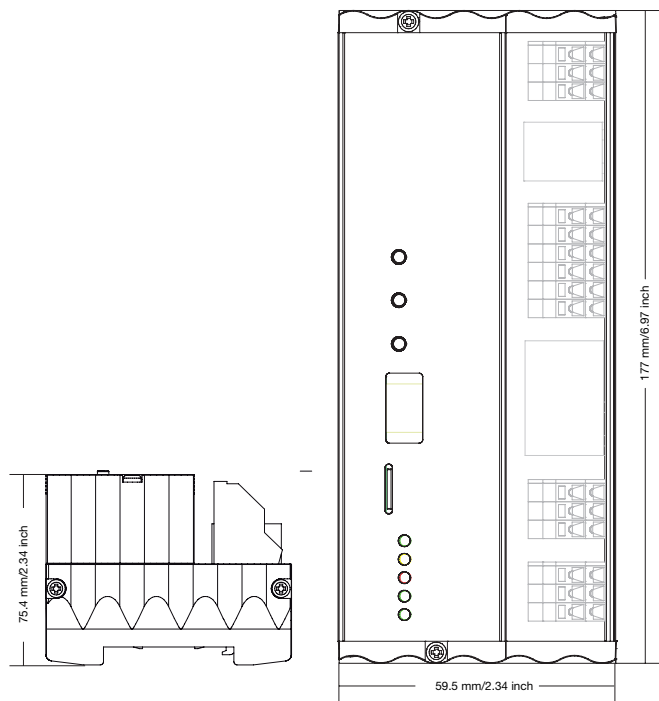
14.2 Hardware

Problem	Check	Cause
EP in display.	Push “System” button on Butler XT3.	The Butler XT3 has an e:bus2 output detection. This reacts for example in case of a short circuits, or “HotPlug” of e:bus2 devices.
New e:bus2 device not found.	Export new show file without any e:bus2 devices. Then export show file with new e:bus2 device.	Each e:bus2 device has a unique ID. Butler XT3 supports a maximum of eight IDs. The ID memory needs to be cleared to identify new e:bus2 devices.
CRD in display (in standalone mode).	New SD card?	If using a new SD card please upload a show file.
CRD in display (in standalone mode).	No assigned cue list?	Butler XT3 can only play exported cue lists.
Glass Touchscreen without function or reboots permanently or screen flickers.	Cable to long, wrong diameter?	View e:bus2 cable lengths and diameters in specification.



15 Dimensions

All dimensions in mm/in



16 Connection diagram

Butler XT3 Connection example
(Standalone or Online Mode)

