

ARCHISHAPE® 2.5 Washer ARCHISHAPE® 2.0 Linear

DMX and RDM Configuration Guide

Cover:

ARCHISHAPE® 2.5 Washer

ARCHISHAPE® 2.0 Linear



TABLE OF CONTENTS

1.	INTRODUCTION	3
2.	CONNECTION	3
2.1	TOOLS	3
2.2	TYPICAL CONNECTION DIAGRAM (WITH BUTLER S2)	3
3.	E:CUE PROGRAMMER CONFIGURATION	4
4.	AUTO-ADDRESSING	6
4.1	EXPERT SETUP	6
4.2	AUTO-ADDRESSING CONFIGURATION	7
5.	RDM CONFIGURATION (OPTIONAL)	9

For your own safety and that of the product, please read this configuration guide carefully before beginning setup and installation.

OSRAM

1. INTRODUCTION

ARCHISHAPE® 2.5 Washer and ARCHISHAPE® 2.0 Linear allow users to configure the luminaire through the e:cue programmer easily. Major feature that can be configured include:

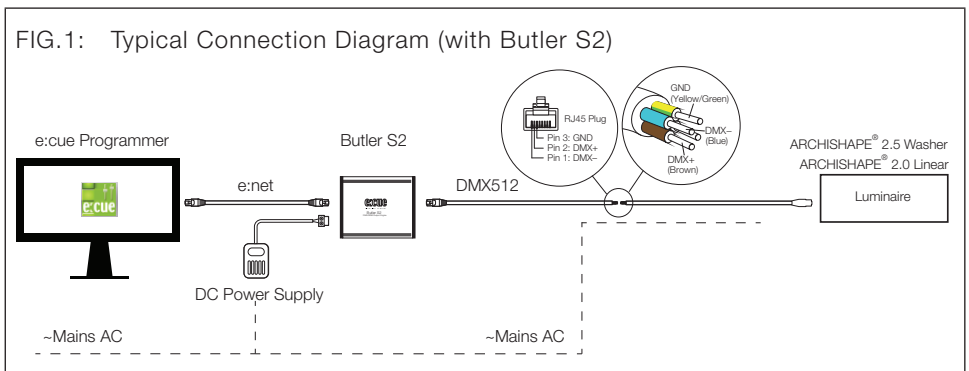
- DMX Auto-addressing

2. CONNECTION

2.1 Tools

- e:cue Programmer (part of Lighting Application Suite, need USB dongle to use ActionPad)
- Butler S2

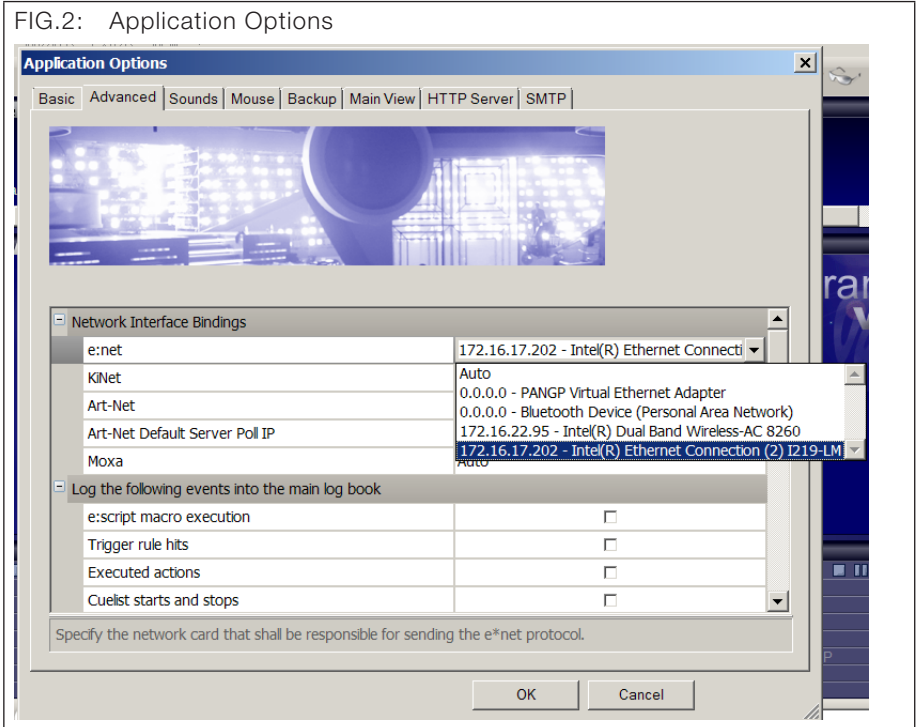
2.2 Typical Connection Diagram (with Butler S2)



3. E:CUE PROGRAMMER CONFIGURATION

1. Open e:cue Programmer (V7.0 or higher).
2. Go to “Application Options” under the “Advanced” top menu.
3. Click “Advanced”.
4. Make sure the “e:net” setting is in the same network for Butler S2. For example, if IP of Butler S2 is 172.16.17.201, then the IP of host computer should be 172.16.17.XXX, which XXX can be any values from 1 to 254.

FIG.2: Application Options

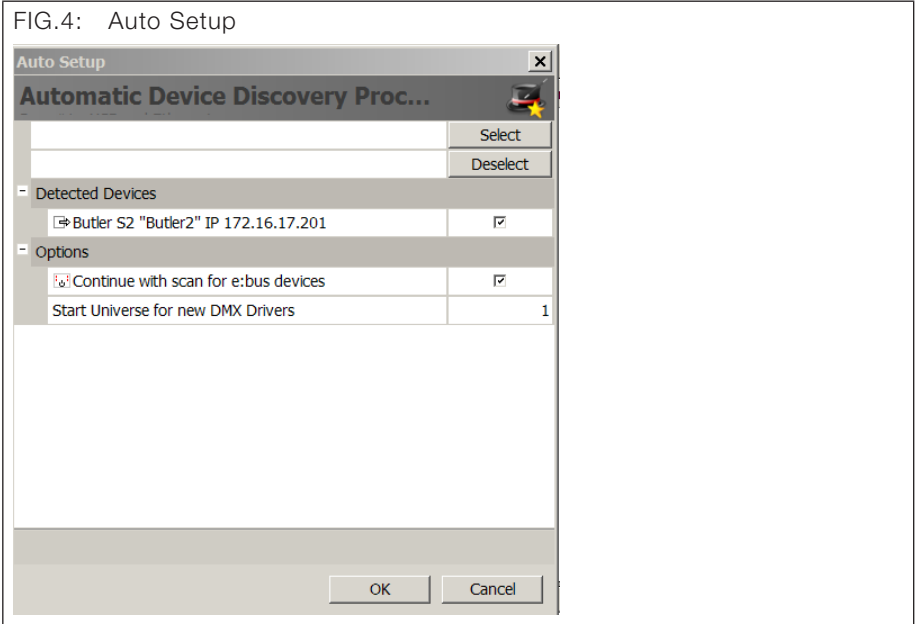


5. Click “Device Manager”.

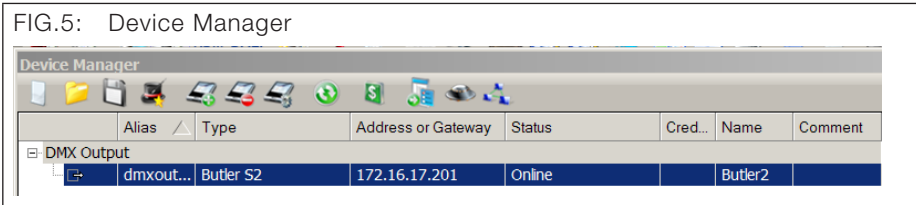
FIG.3: Device Manager



- Click “Automatic Device Setup Wizard”, then click “OK” if the Butler S2 is detected:



- Then the Butler S2 will be “Online” in “Device Manager”.

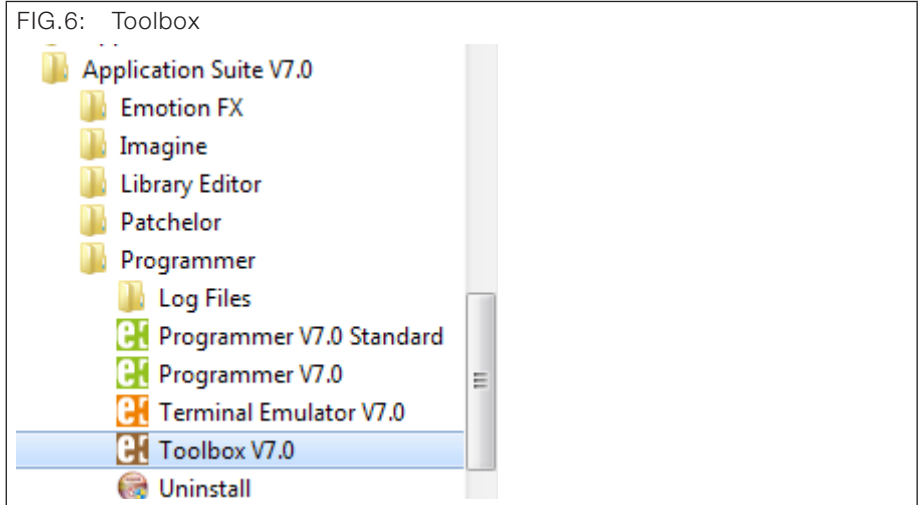


OSRAM

4. AUTO-ADDRESSING

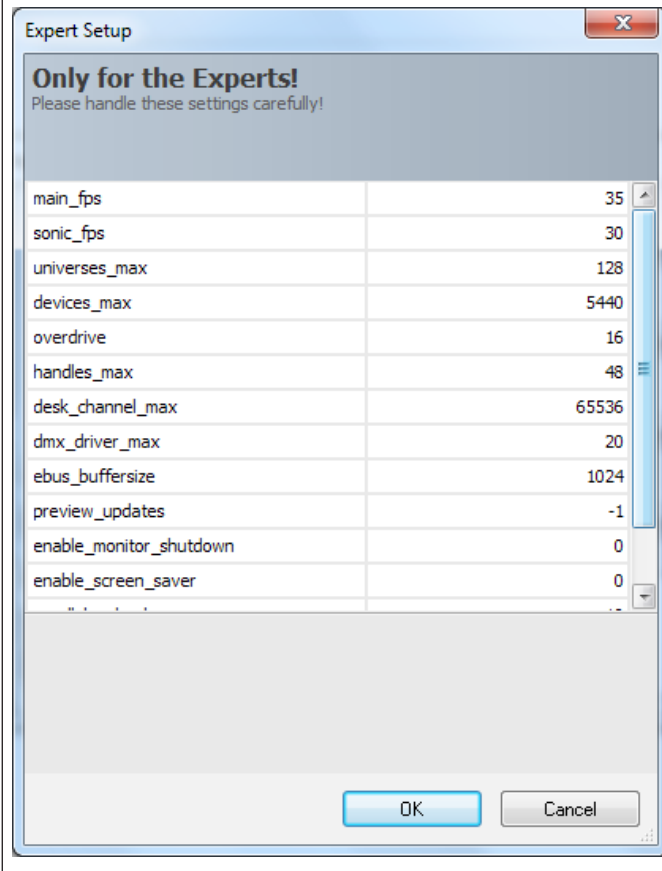
4.1 Expert Setup

1. Select “Application Suite” > “Toolbox”.



2. Click “Expert Setup”.

FIG.7: Expert Setup

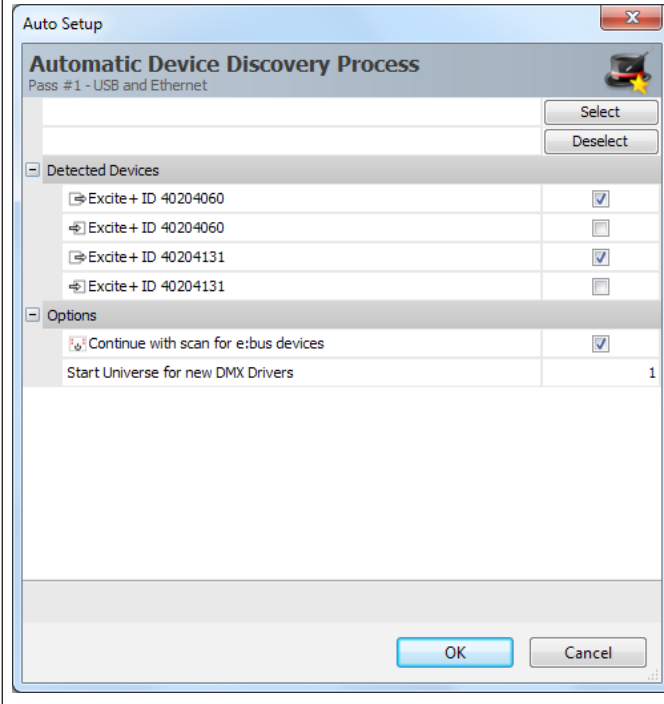


3. Set "universe_max" to 128 and "desk_channel_max" to 65536.
4. Click "OK".

4.2 Auto-addressing Configuration

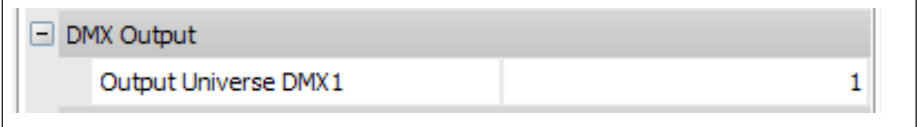
1. Open a show file and detect any online device in the "Device Manager".
2. Click the "Auto Detect Wizard" icon, and then set the detected device as the output device.

FIG.8: Auto Setup



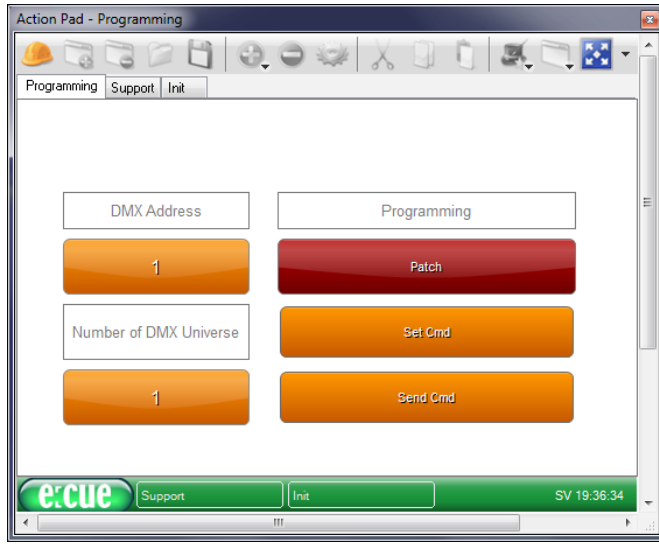
3. Right-click and select "Properties" to check each device properties. The output universe should be 1 and other universes should start from 2. The number increases when more devices are connected.

FIG.9: Device Properties



4. Click "OK".
5. Press **CTRL + F2** to open the Action Pad.

FIG.10: Action Pad



6. Enter the **DMX Address** and **Number of DMX Universe**.
7. Click “Patch”.
The Patch button turns orange.
8. Click “Set Cmd” and wait for a few seconds.
9. Click “Send Cmd” and wait for a few seconds.
When the auto-addressing is complete, the first 16 DMX channels of each universe should be 128. The fixtures will turn on accordingly.

5. RDM CONFIGURATION (OPTIONAL)

1. Click “RDM Manager”, all ports are default disabled with RDM function.
2. Right click “Butler2”, then select “Enable RDM”.
3. The interface will then list out all RDM devices connected to the Butler S2:

FIG.11: RDM Manager

Device	Label	Type	Manufacturer	DMX Addresses	State	Sensors
0529:20300089	Archishape Washer RGBW L	Not Declared	OSRAM	[U1] 1-4	Online (since 04/25 14...	None
0529:3C1D053C	Archishape Washer White M	Not Declared	OSRAM	[U1] 5	Online (since 04/25 14...	None

NOTE: RDM configuration only supports the luminaires with RDM function.

OSRAM

Information is subject to change without prior notice.