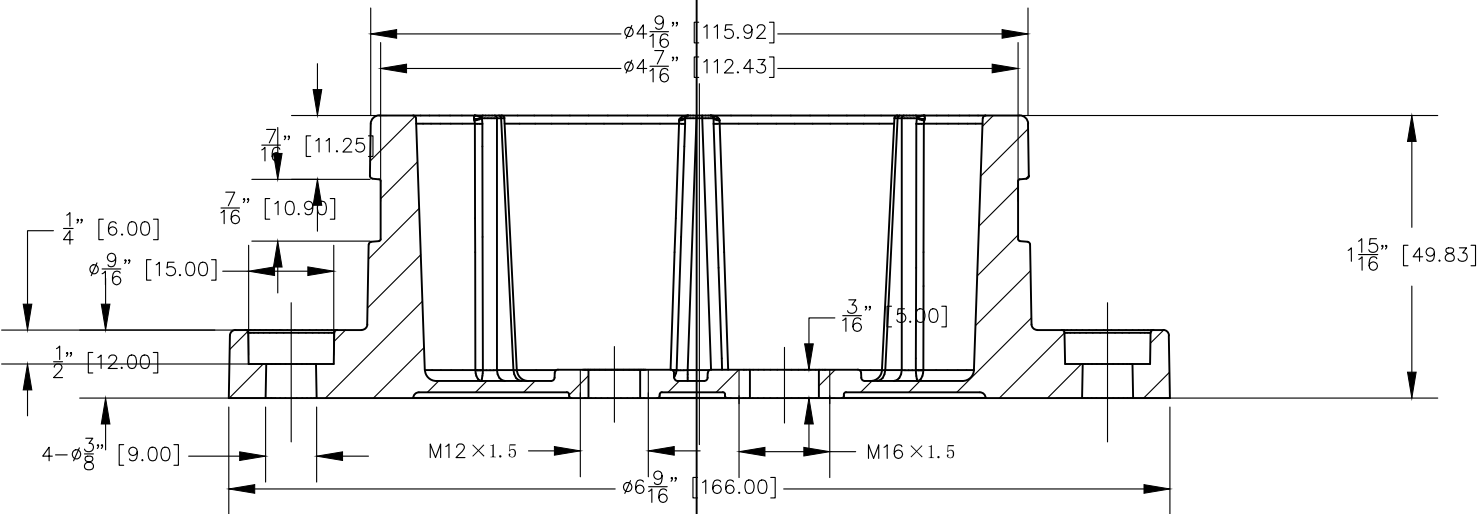
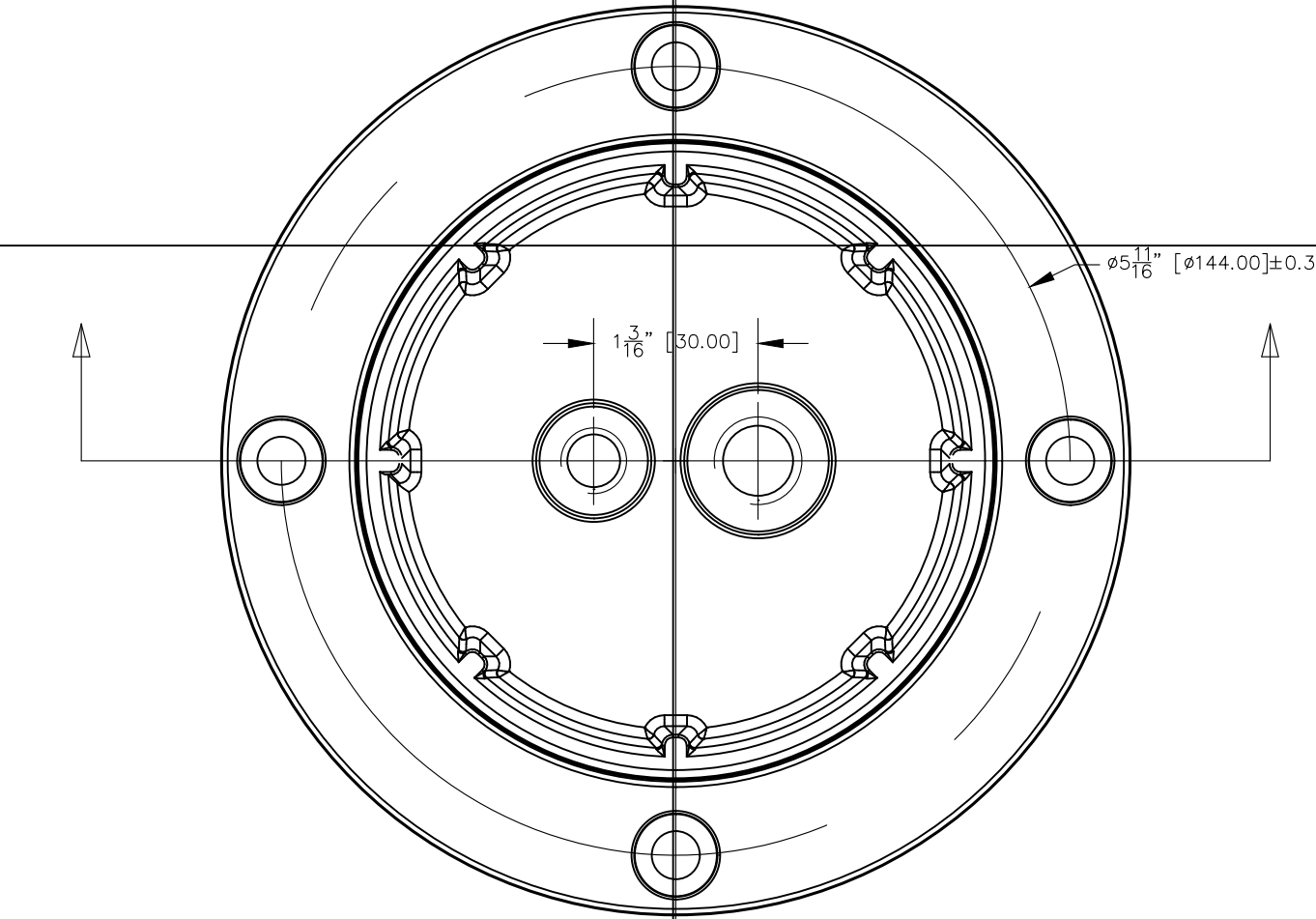




ProPoint Washer 80W Wall Mount Detail

SCALE: N.T.S.



PROJECT: ProPoint Washer Wall Mount Detail

LOCATION:

DATE: 10/24/2018

FILE NAME:

SHEET SIZE: ANSI B  
SHEET NUMBER: TX02

DRAWN BY: CAC

CHECKED BY: ---

SHEET TITLE:

ProPoint Wshr Wall Mnt. Detail 80W

traxxonercue  
AN OSRAM BUSINESS

20 MURRAY HILL PARKWAY  
EAST RUTHERFORD, NJ 07070  
201.508.1570 [T] · 201.508.1589 [F]  
WWW.ITEXON-USA.COM

Traxxonercue is a subsidiary company. We are happy to provide whatever information and documentation is needed to clarify the system design and ensure understanding of our products. Please know, however, that our expertise is limited to our products only. Traxxonercue and its employees cannot be held responsible for decisions relating to fixture layout, lighting design, wiring, or any other suggestions. They must be reviewed by qualified professionals and incorporated into the contract documents of each relevant end user. On that same note, we will make every effort to ensure that a system is installed and working properly. To that end, a system commissioning service may be needed as part of the project. Declining the system commissioning service absolves Traxxonercue of any and all responsibility for the functioning of the finished system beyond the standard product warranty. It is the responsibility of the end user to ensure that the system is installed and working properly. Traxxonercue does not provide pre-ignition or an accounting of fixture as part of its services, and cannot accurately quote third-party materials required for mounting installation. Traxxonercue is not responsible for customer (e.g., electrical) lighting wiring issues. It is the responsibility of the customer to provide all necessary equipment and materials for successful installation. Traxxonercue is happy to support your team in every way we can, and we look forward to a beautiful and successful installation.

© 2016 Traxxon Technologies