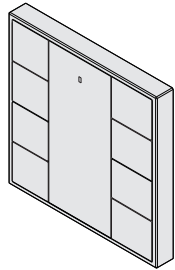


# DALI2 Panel 8-Key Instructions



## Highlights

- DALI-2 control device with 8 push buttons according to IEC62386-101, IEC62386-103, IEC62386-301 and IEC62386-332
- Available in three color versions: metal, black and white
- Suitable for integration and in combination with DALI-2 compliant central control units
- Supports feedback functionality, provides 16 LEDs
- Multimaster capable, multiple modules can be installed on the DALI- line
- DALI bus powered, no extra power supply required
- Easy installation: the device can be installed in a flush-mounted installation box
- Compatible with universal 55mm frames

## Delivery scope

### Identcode

- e:cue DALI2 Panel 8-Key (main body, frame, mounting plate)
 

metal	CL23100279155
white	CL23100279355
black	CL23100279555
- Screws, 2 x
- Transparent central cover plate
- Safety instructions
- Instructions

## Optional accessories

- SYMPL dali Node AB444230035

## Product specifications

Dimensions (W x H x D)	80 x 80 x 26.6 mm / 3.15 x 3.15 x 1.05 in
Weight	black, white: 89.5 g / 0.2 lb metal: 101.4 g / 0.22 lb
Mounting	Wall mount, suitable for most international in-wall mounted boxes
Max. casing temperature T <sub>c</sub>	75 °C
Expected life time @T <sub>c</sub>	50,000 H
Protection class	II in Intended Use
Protection degree housing	IP20
Protection degree terminals	IP20
Certificates	CE, DALI-2, UKCA, RoHS

## DALI interface

Input type	DALI
Marking	DA, DA
Voltage range	12 V DC - 22.5 V DC (according IEC62386-101)
Typ. current consumption DALI (at 16.5 V)	2 mA
Max. current consumption DALI (Inrush current at 22.5 V)	10 mA
Number of addresses for DALI control gear	DALI
Number of addresses for DALI control devices	8 programmable push buttons
Number of feedback LEDs	16 programmable LEDs
Push confirmation LED	yes (1)

## Terminals

Connection type	Push-In
Wire size solid core	0.2 ... 1.5 mm <sup>2</sup> (AWG 26 ... AWG 16)
Wire size fine core	0.2 ... 1.5 mm <sup>2</sup> (AWG 26 ... AWG 16)

Wire size using wire end ferrule 0.25 ... 1.0 mm<sup>2</sup>

Stripping length	9 ... 10 mm / 0.35 ... 0.39 inch
Tightening / release of wire	Push button

## Environment conditions

Storing temperature	-20 ... +50 °C / -4 ... 122 °F
Working ambient temperature	-20 ... +50 °C / -4 ... 122 °F
Relative humidity	8 ... 80 %



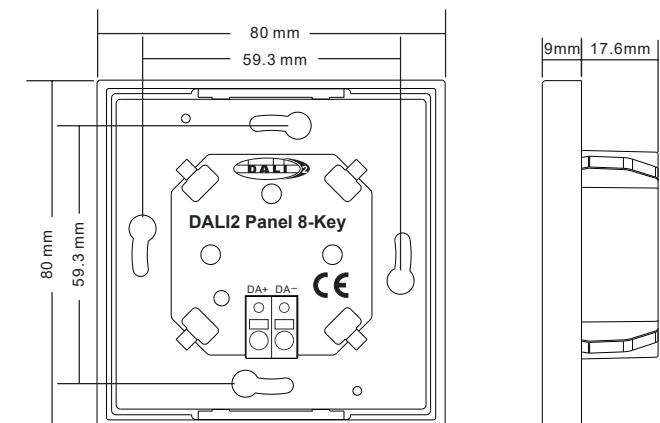
For further product information and downloads see [www.ecue.com](http://www.ecue.com).

## Safety & Warnings

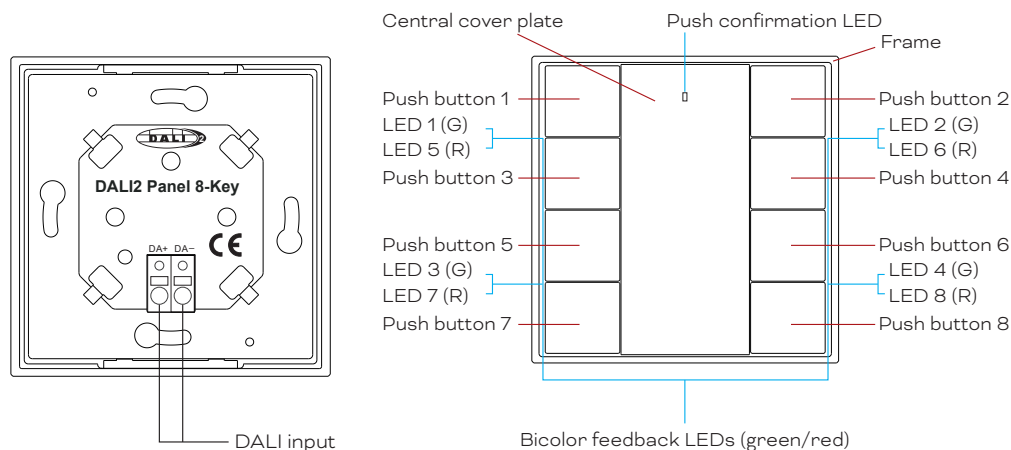


- Do not install with power applied to device.
- Do not expose the device to moisture.
- Read the instructions prior to installation.

## Dimensions

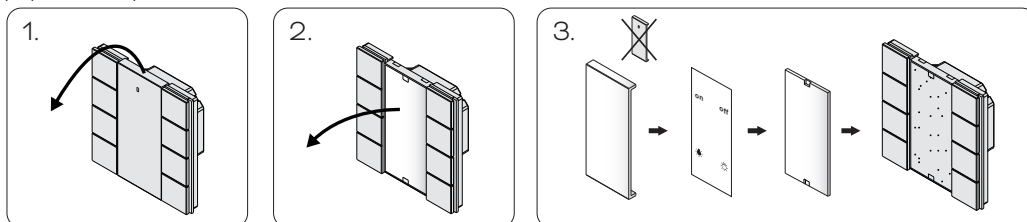


## Connectors & Interfaces

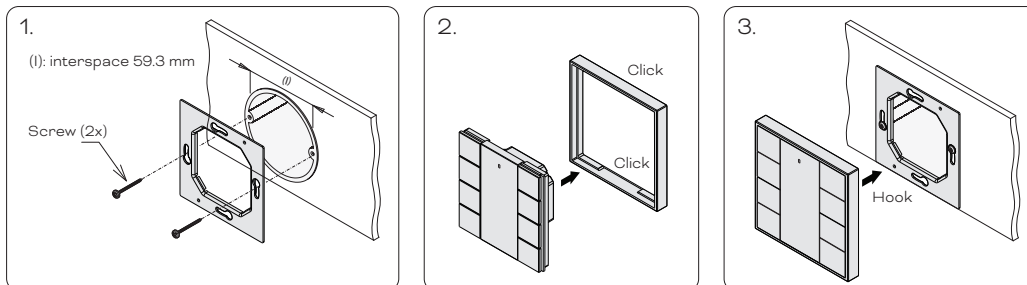


## Push button function label

A Push button label can be added to indicate whatever functions are configured to the push buttons. Please download the customizable button function file in Excel format from <https://eu.traxon-ecue.com/products/sympho-dali2-control-panel> → Downloads or via this QR code. The file will generate corresponding label images after selecting the desired function for each button. Print it, cut the paper in shape and install as follows:



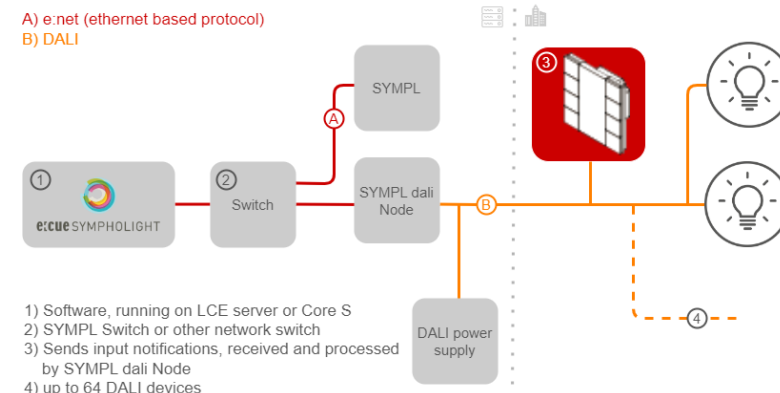
## Installation



## Application & Function

Integration in a system with DALI-2 compliant central control unit, button pushes result in input notifications (event messages).

The SYMPHO DALI2 Panel 8-Key can be used as an input device for the integration in DALI-2 compliant central lighting control systems. In this mode each input ("instance") informs about changes by using so called "input notifications". These event-messages can be evaluated by other controllers on the DALI line e.g. as trigger for commands sent to luminaires.



The SYMPHO DALI2 Panel 8-Key provides 8 instances (1 - 8) of type 1 (IEC62386-301, Input Devices - Push Button) which are assigned to the 8 button inputs.

According to the standard the following input notifications are supported:

Event Name	Event Information	Description
Button released	00 0000 0000b	The button is released.
Button pressed	00 0000 0001b	The button is pressed.
Short press	00 0000 0010b	The button is pressed and released, without being pressed quickly again (in case of double press enabled), or the button is pressed and quickly released (in case of double press is disabled).
Double press	00 0000 0101b	The button is pressed and released, quickly followed by another button press.
Long press start	00 0000 1001b	The button is pressed without releasing it.
Long press repeat	00 0000 1011b	Following a long press start condition the button is still pressed, the event occurs at regular intervals as long as the condition holds.
Long press stop	00 0000 1100b	Following a long press start condition, the button is released.
Button free	00 0000 1110b	The button has been stuck and is now released.
Button stuck	00 0000 1111b	The button has been pressed for a very long time and is assumed stuck.

Further parameters of the instances 1-8 are: event filter, event timer settings (short timer, double timer, repeat timer, stuck timer), which can be configured according to IEC62386-301.

## Feedback Functionality

The SYMPHO DALI2 Panel 8-Key supports feedback functionality to inform the user about the system state. The supported feedback type is visible feedback using 16 LEDs.

The instance numbers of the 16 LEDs are as follows (according IEC62386-332, Input Devices – Feedback):

LED	Instance Number
LED 1 (G)	0x20
LED 2 (G)	0x21
LED 3 (G)	0x22
LED 4 (G)	0x23
LED 5 (G)	0x24
LED 6 (G)	0x25
LED 7 (G)	0x26
LED 8 (G)	0x27
LED 9 (R)	0x28
LED 10 (R)	0x29
LED 11 (R)	0x30
LED 12 (R)	0x31
LED 13 (R)	0x32
LED 14 (R)	0x33
LED 15 (R)	0x34
LED 16 (R)	0x35

### Commands to activate and stop feedback

Command Name	Opcode byte
ACTIVATE FEEDBACK	0x10
STOP FEEDBACK	0x11

Feedback variables and additional commands like

- feedbackActive,
- feedbackTiming,
- feedbackActiveBrightness,
- feedbackActiveColour,
- feedbackInactiveBrightness

and

- feedbackInactiveColour

can be configured according to IEC62386-332.